

Description

FULLTEC ULTRA

Fulltec Ultra utilizes Spraytec Plant Health Technology and the right level of Manganese to prevent White Mold (*Sclerotinia stem rot*) caused by Glyphosate-induced Manganese deficiency and other leaf diseases in soybeans. Fulltec Ultra also ensures a high-quality spray application with Spraytec Application Technology.

Main Benefits:



Availability

Nutrients in EDTA form ensure Manganese is fully available during the application.



Pesticide Compatible

Fulltec technology prevents incompatibility with different pesticide mixtures and improves the quality of the application.



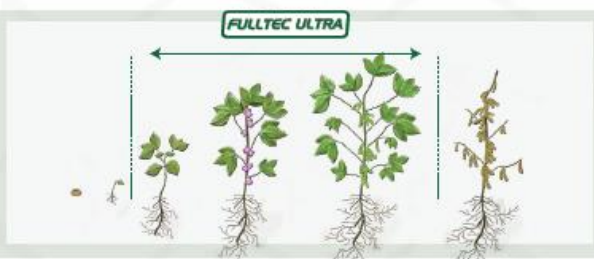
Harmless

Fulltec Ultra prevents major diseases in soybeans by reducing the injuries and stresses caused to the plants by chemical applications.



Directions

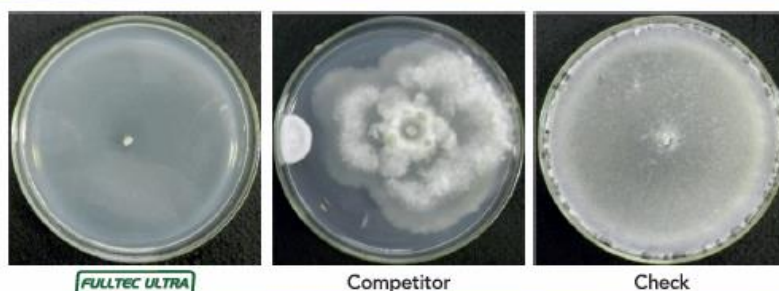
Crop	Rate	Timing
Soybeans	4.0 oz/acre	V3 - R4
Cereals	4.0 oz/acre	-



Results



2017 Trials - under heavy Downy mildew of soybean (*Peronospora manshurica*) presence.
Fulltec Ultra 4.0 oz/acre @ V5



2019 Trials - Spraytec R&D - All dishes infected with White Mold (*Sclerotinia stem rot*).
Fulltec Ultra 4.0 oz/acre / Competitor 9.0 oz/acre.



Modern Ag
1403 9th Ave SW
Watertown, SD 57201
605-882-6922

IMPORTANT: Always read and follow label instructions when using this product.

Spraytec and Fulltec Ultra are trademarks of Spraytec Fertilizers, LLC. All photos are either the property of Spraytec or are used with permission. All other trademarks are the property of their respective owners.

This product is for sale only in the registered states. Please ask Spraytec for a specific list of states where sales or distribution of this product is permitted.

100% biodegradable product.